



## Applications

Easilift mechanism permitting lower lift, and stowage of a Dispenser Intake Hose Coupling.

## Features

- Reduced lift loads – provides 2.5:1 mechanical advantage.
- Lightweight zinc plated steel design
- Stainless steel bucket
- Positive rubber grip handle
- Simple operation

## Options

- Manual mechanical version (shown)
- Hydraulic powered version
- In-line and right angled (not proud of vehicle) versions



## Specification

The Fluid Transfer Intake Coupling Easilift used in conjunction with the Fluid Transfer Intake Hose Easilift and Hose Trolley's are designed to make heavy 100mm (4") - Hydrant Dispenser Intake Hose Coupling assemblies easier to lower lift, and stow.

All aircraft refuelling hoses are heavy to handle but the 100mm Intake Hose is by far the heaviest and most awkward to lift. The operator has to bend over to reach the Intake Coupling handle, which is typically no more than 300mm above ground level.

This design considerably reduces the likelihood of the vehicle operator suffering from back strain.

Fluid Transfer (on request) can also offer a complete hydraulic system for lowering, lifting and stowing the Intake Hose.

# Intake Coupling Easilift

Part No DD7104, DC7248

## Technical Data

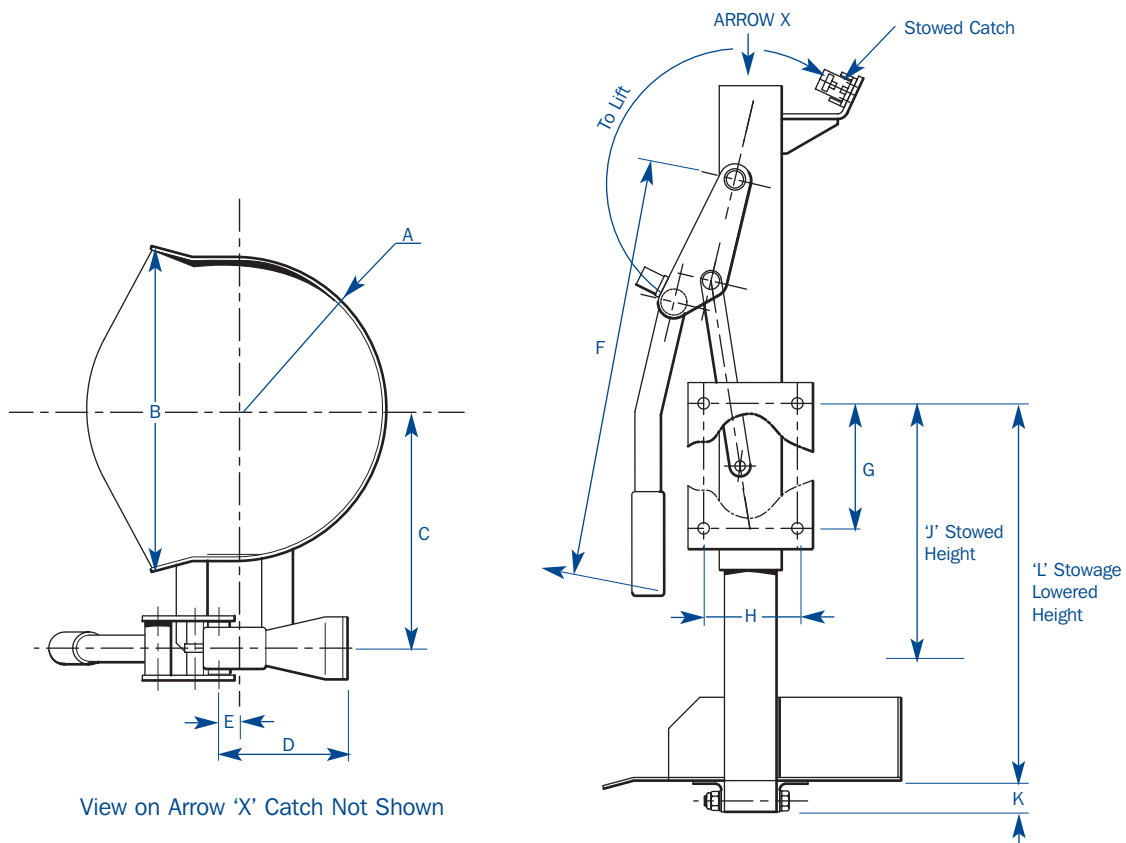
The Fluid Transfer Intake Coupling Easilift is a mechanical "over centre" device attached to the dispenser subframe consisting of an actuating handle, a lifting enclosed table (height adjustable) and a spring-loaded safety latch. The Easilift gives a mechanical advantage of approximately 2.5:1 and the actuating handle is located at a convenient height for the operator.

The cradle design receives a typical intake coupling complete with integral secondary pressure control and Deadman valve complete with retractable carriage. The Intake coupling stowage can be interlocked to ensure correct stowage prior to operator departing the area following completion of the fuelling exercise.

## Options

The Intake Coupling Easilift is available in the following versions all with the tray facing outwards:

Part No	Item	Version
DD7104-1	RH Vehicle (handle facing outwards)	Standard
DD7104-2	LH Vehicle (handle facing outwards)	Standard
DC7248	RH/LH Vehicle (handle facing outwards)	On Request
DC8520	Hydraulic (handle facing outwards)	On Request



## Dimensions

The Fluid Transfer Intake Coupling Easy-lift dimensions are as follows:

Part No.	A	B	C	D	E	F	G	H	J	K	L
DD7104	Ø290	310	230	124	15	Ø 410	120	90	200	30	392

Dimensions in (mm)

Closed height, J and open height, L.

Fixing dimensions G and H.

Weight 12 kg