

# 80mm and 100mm Heavy Duty Stainless Steel Swivels

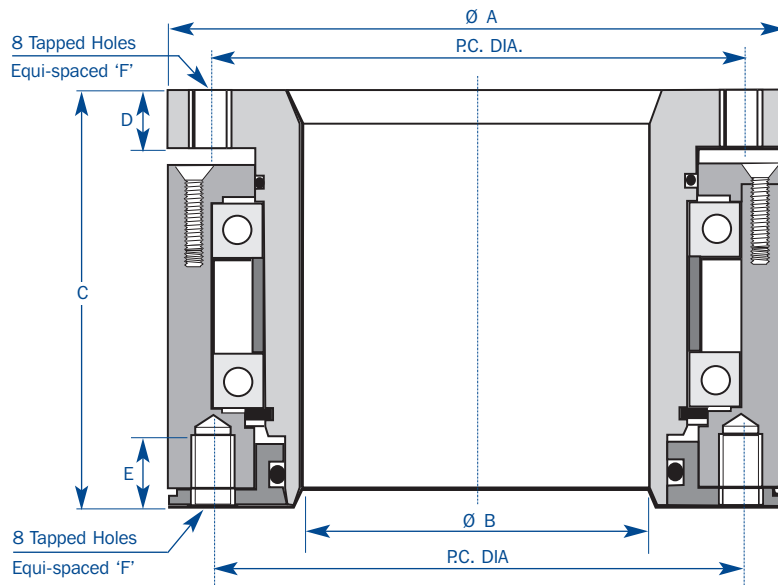
Part No DC1233/DC1113

fluid transfer  
international

## Technical Data

The swivel is offered in two sizes; 80mm and 100mm with the following features.

- Mounting flanges to DIN28460 series complete with pre-tapped mounting holes.
- Sealed and packed for life maintenance free heavy duty bearings.
- Seals manufactured from Viton material.
- Maximum working pressure 10.4 bar (150psi).
- Maximum test pressure 20.8 bar (300psi).



## Packing Dimensions

Swivel Size	A	B	P.C.DIA.	C	D	E	F	Weight
80mm swivel DC1233	Ø154mm	Ø80mm	Ø130mm	105mm	13mm	15mm	M10	9.2 Kg
100mm swivel DC1113	Ø174mm	Ø100mm	Ø150mm	120mm	16mm	15mm	M12	12.3 Kg

## Options

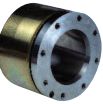
Other versions of these swivels are available

- ASA or ISO Flanges
- 90 elbows
- 180 elbows
- Short/Standard radius elbows

## Maintenance

Fluid Transfer International offers a full service exchange facility on all our swivels. This allows minimal operational disruption during maintenance schedules with guaranteed product quality.

FTI's policy of continuous improvement means we reserve the right to alter designs and specifications without notice. The descriptions, illustrations and product references in the datasheet are for information purposes only and are not binding.



## Applications

Rotating hose joints where mechanical radial loads are applied such as those at Hydrant Dispenser intake hose booms.

## Sizes Available

80mm and 100mm bore with standard flanges to DIN28460 Series.

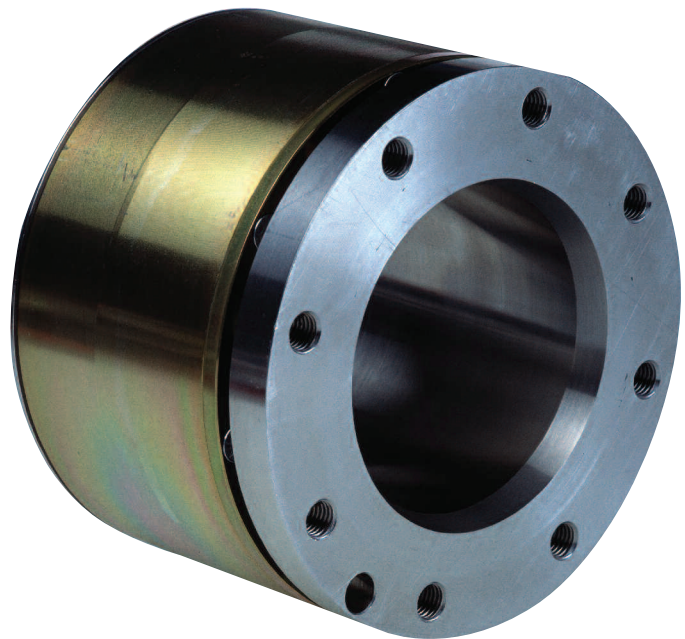
## Features

- Stainless Steel Inner, Plated Steel Outer.
- Viton Seals
- Maximum working pressure 10.4 bar.
- Sealed for life (ball race type) bearings, giving low swivel resistance and high wear resistance.
- Seal design provides low resistance to rotation.
- All components in contact with fluid constructed from Stainless Steel.

## Options

Other versions available are :

- ASA or ISO Flanges
- 90 elbows
- 180 elbows
- Short/Standard radius elbows



## Specification

The Fluid Transfer heavy-duty swivel is designed to give long maintenance free service under the most arduous operating conditions.

The flow path is stainless steel, thus preventing any possible contamination of the fluid product. The fluid seals are designed to provide minimal resistance to rotation allowing ease of use whilst remaining impervious to aviation fuels.

The heavy-duty construction of the swivel provides a robust solution suitable for applications where mechanical radial loads are imposed. The swivels are used extensively on hydrant dispenser intake booms and pantographs where safety and performance cannot be compromised.