



Hose Pressure Test Coupling

Part No DBA10605

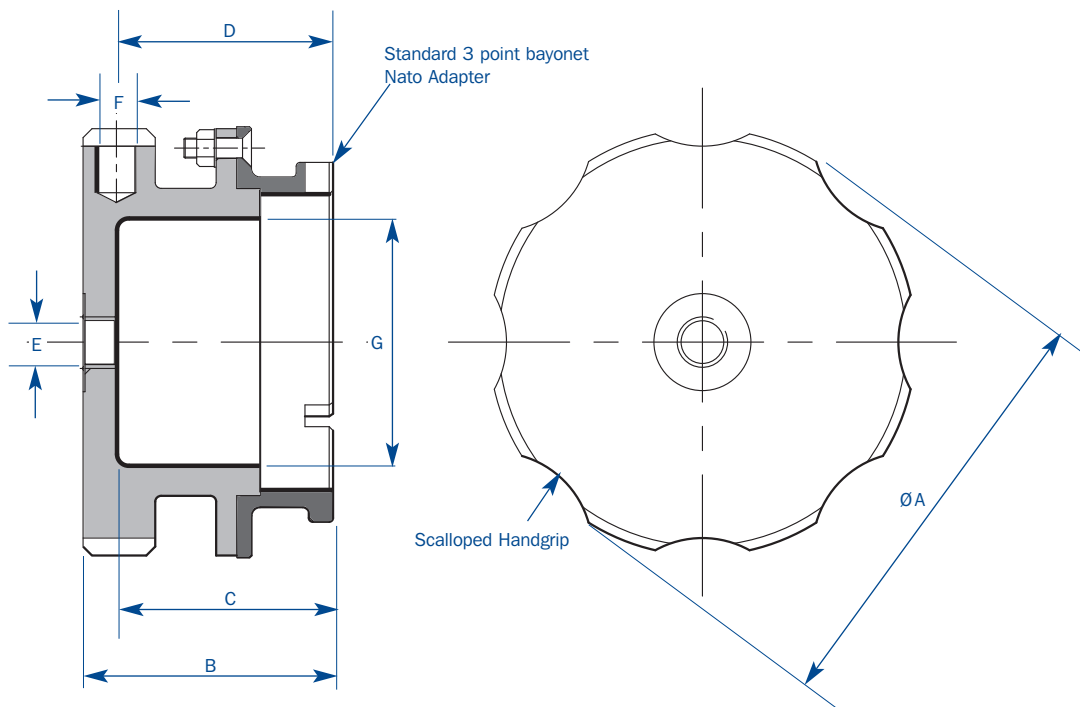
fluid transfer international

Technical Data

The body of the Fluid Transfer Hose Pressure Test Coupling is finished in aluminium alloy. A 1/4" BSPPF tapping is provided for connection to the external test pressure source. A 3-point standard NATO Bayonet adapter made in brass is sealed to the body with flush countersunk hexagon socket screws.

The Coupling is designed for use with all proprietary Hose End Pressure Control nozzles (Eg. Avery, Hardoll, Carter, Whittaker etc). The body of the Coupling allows sufficient room for both models of poppet profile in their open position.

During testing any relevant sensing line isolating valves, depressurising valves etc which may be connected to the circuit must be closed. Approximately 100ml of fuel is released during disconnection and provision should be made to suitably contain it. Hole 'F' is provided for a lever to be inserted to release the coupling should pressure have locked the coupling to the Hose End Pressure Controller.



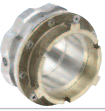
Dimensions

The Fluid Transfer Hose Pressure Test Coupling dimensions are as follows:

Part No	Item	A	B	C	D	E	F	G	Weight
DBA10605	Hose Pressure Test Coupling	Ø110	70.3	61.5	61.7	Ø1/4"BSP	Ø10	Ø76.3	0.9kg

Dimensions in (mm)

FTi's policy of continuous improvement means we reserve the right to alter designs and specifications without notice. The descriptions, illustrations and product references in the datasheet are for information purposes only and are not binding. (Updated December 09)



Applications

Adapter permitting connection with Hose End Pressure Controllers to allow in-situ testing of hoses, used in conjunction with Air-Powered Pressure Test Pump DC27530.

Sizes

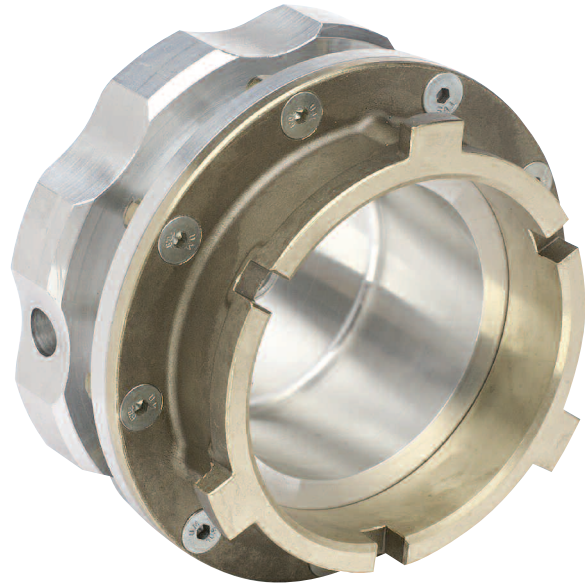
Standard profile 3-point bayonet adapter to suit all proprietary Hose End Pressure Control nozzles. Eg. Avery, Hardoll, Carter, Whittaker etc.

Features

- Aluminium body with scalloped hand grip
- Brass NATO standard adapter
- 1/4" BSP test pump connection tapping

Options

Used in conjunction with Fluid Transfer Air-Powered Pressure Test Pump DC27530, see separate data sheet.



Specification

The Fluid Transfer Hose Pressure Test Coupling is designed to permit in-situ pressure testing of aviation refuelling delivery hoses fitted with underwing pressure refuelling nozzles.

Used in conjunction with the Fluid Transfer Air Powered Pressure Test Pump DC27530 or similar, the required test pressure can be applied to the test hose via a tapping in the body of the coupling. To undertake pressure testing, the Coupling is connected to the hose end nozzle, the delivery hose flow control valve is closed and the nozzle poppet opened.

The Pressure Test Coupling can also be used in conjunction with underwing pressure refuelling nozzles, which are fitted with integral spring set pressure regulating/surge controllers. These regulators are fitted with small non-return valves, which allow high downstream pressure to bleed upstream in the hose as the upstream pressure decays.